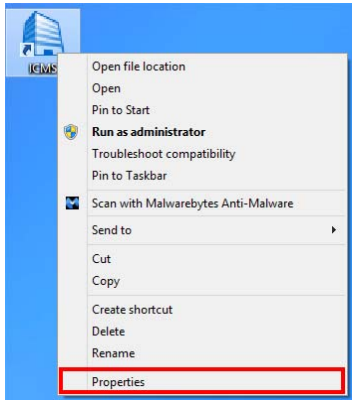


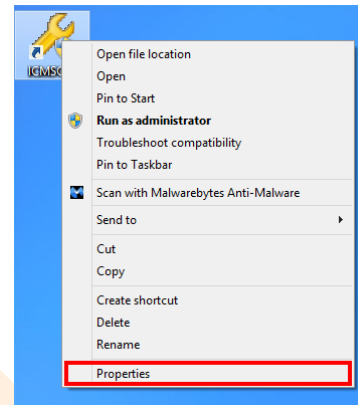
Application Note: Running ICMS on Vista/7/8

To run ICMS on PC's loaded with Microsoft Windows Vista/7/8, there are a few things that will need adjusting before you will be able to use it successfully.

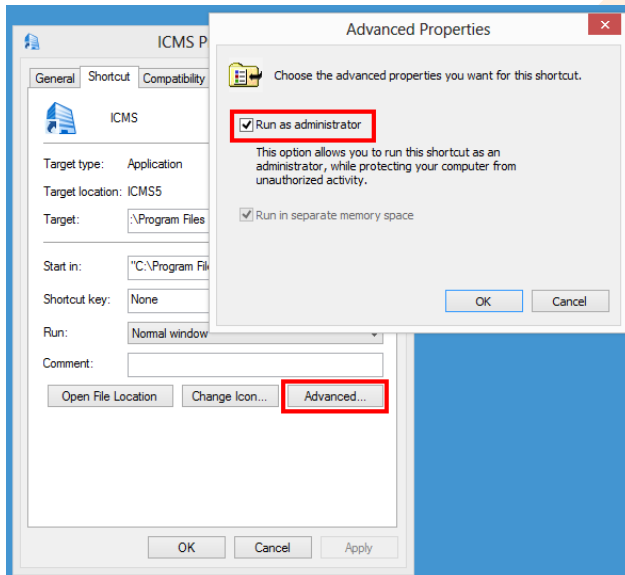
Step 1. After installing ICMS on the computer, you will notice 2 new icons on your desktop, ICMS and ICMS Configuration. First, **RIGHT CLICK** on the ICMS icon and select **Properties**.



Step 3. **RIGHT CLICK** on the ICMS Configuration icon and select **Properties**.



Step 2. Click the **Advanced** button in the shortcut properties window and check the **Run as administrator** checkbox. Click OK back to the desktop.



Step 4. Click the **Advanced** button in the shortcut properties window and check the **Run as administrator** checkbox. Click OK back to the desktop.

