

USB to RS-485 Communication Adapter

The M205-USB is a USB to RS-485 Communication Adapter that can be used to communicate to Solidyne networked controllers using the RS-485 communication standard.

It is compatible with Windows 2000, XP, Vista and 7 and requires at least 1 USB (1.0, 1.1 or 2.0) port. The M205-USB will create a new communication port onto your pc viewable through Window Device Manager.

Specifications

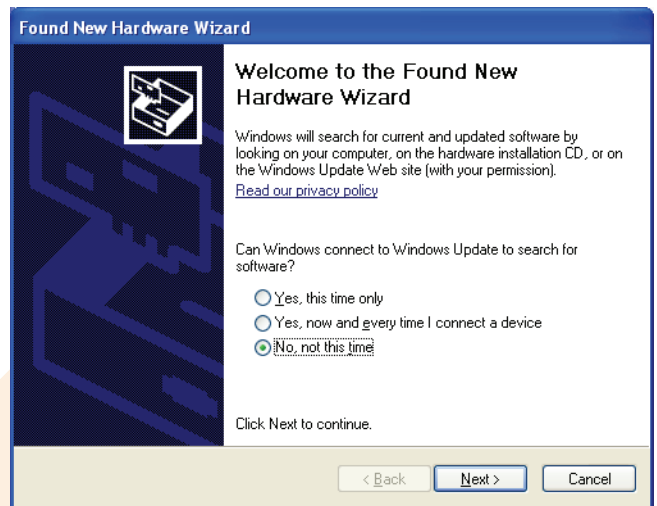
- Temperature Range:** 0-70°C (32-158°F)
- RS-485 Baud Rate:** all baud rates up to 460.8kbps
- RS-485 Connector:** T connector for M2 controllers
- USB Power:** up to 100mA
- Operating System:** Windows 2000, XP, Vista, 7
- LED Indicators:** Transmit, Receive
- Package Contents:** Driver CD, M205-USB

Wiring

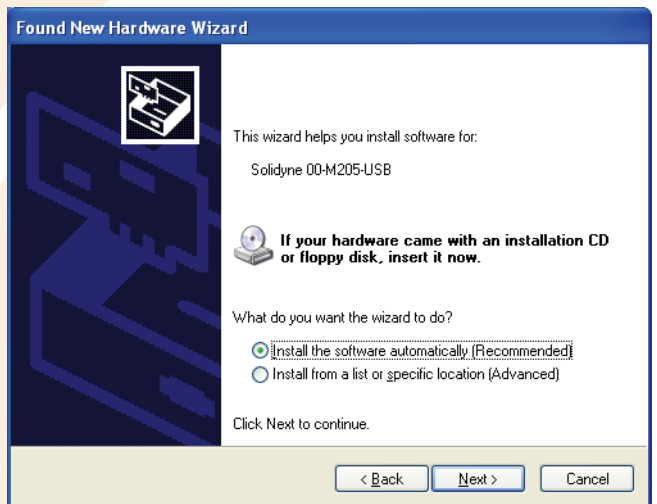
At the end of the M205-USB cable are 2 phoenix type terminal connectors. One is a black male terminal block which plugs directly to the M2 controller. The other connector is a female terminal block socket that can be used to plug into the rest of the RS-485 network allowing communications to all of the controllers.

Driver Installation

The M205-USB ships with a CD that contains the driver for the device. If you have lost or misplaced your driver, you can always download the driver from the solidyne.com website by searching for M205-USB.



Step 1: Plug the M205-USB into an available USB port on your computer. The screen above appears, telling you that there is a new device plugged into the USB bus. Click on *No, not this time*, then the **Next>** button.

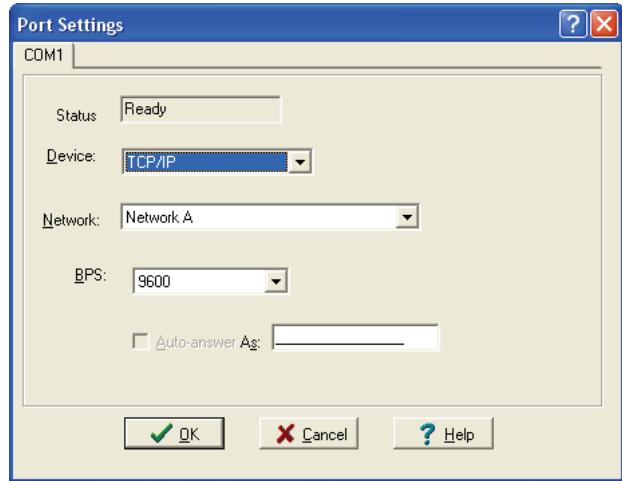


Step 2: The screen above appears. Make sure *Install the software automatically (Recommended)* is selected. Then click the **Next>** button.

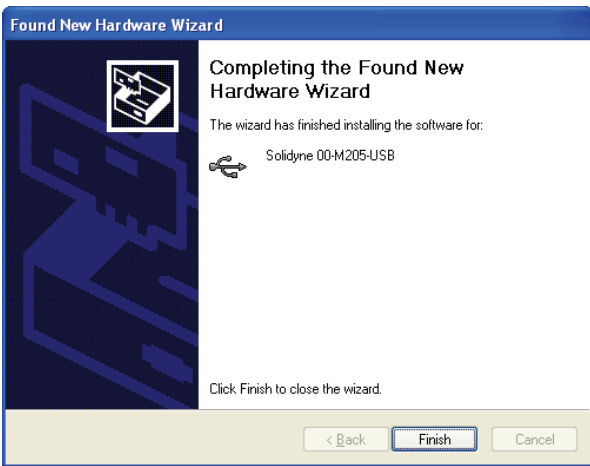
*If you have downloaded the driver, you will need to select the **Install from a list or specific location** and then navigate to the driver files located on your computer.*



Step 3: The screen above appears. Click the **Continue Anyway** button.



NOTE: When using an M205-USB in ICMS, you must select connection type as **TCP/IP**



Step 4: When the installation is complete, click the **Finish** button.

Step 5: You will also need to continue to install the serial port the same way you installed the converter using steps 1-4.

© Copyright 2010 Solidyne Corporation All rights reserved.

No part of this document may be photocopied or reproduced by any means, or translated to another language without prior written consent of Solidyne.

All specifications are nominal and may change as design improvements are introduced. Solidyne shall not be liable for damages resulting from misapplication or misuse of its products.