

M206 Remote Communication Module

The M206 Remote Communication Module is designed to be installed in applications requiring remote modem to modem communications to Solidyne control systems.

With configurable baud rates up to 57.6k, the M206 can be used on the latest M2 networks. The M206 comes with an onboard 56k modem and can be easily panel mounted.

Specifications

- Input Power:** 23 to 28VAC 50/60Hz
- Power Consumption:** 2VA
- Operating Temperature:** 40 to 140 F (4 to 60 C) *
- Operating Humidity:** 10 to 95 %RH non-condensing
- Dimensions:** 4.5"H x 5"W x 7"D

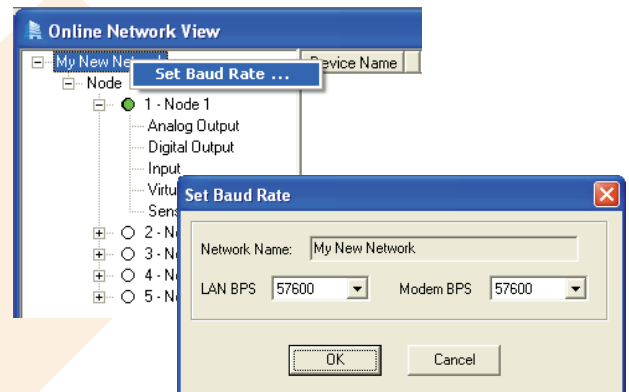
Hardware Installation

1. Remove M206 cover and insert BATT ON jumper
2. Wire 24VAC to 2 position terminal blocks 1 & 2.
3. Wire 3 wire RS-485 bus to terminal 3, 4 & 5 (C_C, B-, B+)
4. Insert phone line RJ11 connector to the Line In socket (J2) of the plug in module NOT the RJ45 J2 socket.
5. Plug in +7.5VDC modem power supply to wall outlet and make sure modem power switch is in ON position.
6. Turn the M206 power switch to ON position.
7. Reattach M206 cover

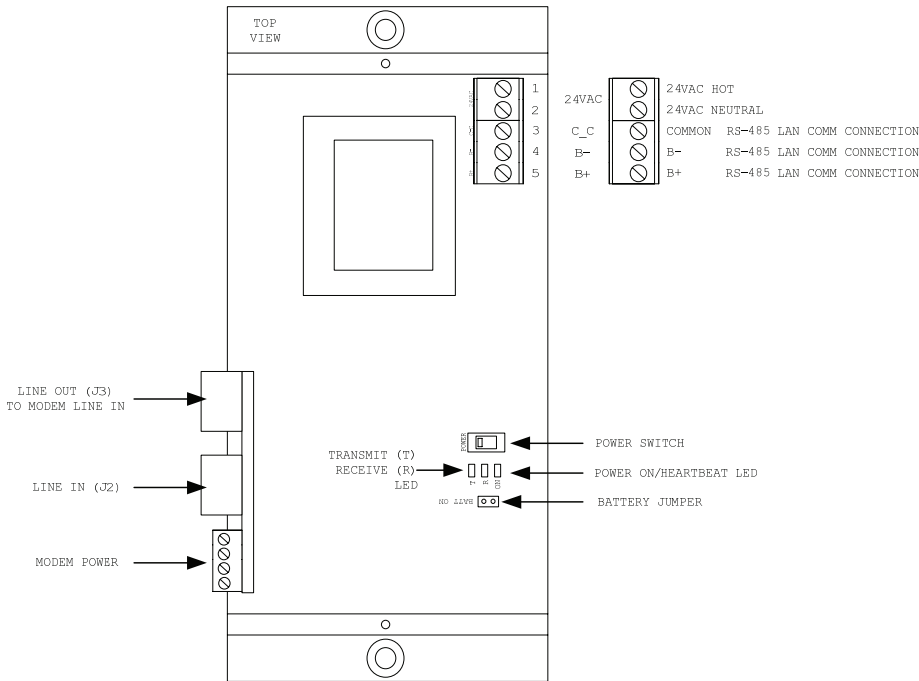
Software Configuration

The baud rate of the M206 is modified through the ICMS software. ICMS 4.0 or later is required. This modification is made to the RS-485 bus communication baud rate. The modems are preconfigured for 56k at the factory and modem to modem communication speed is auto negotiated and no configuration to the M206 modem is necessary.

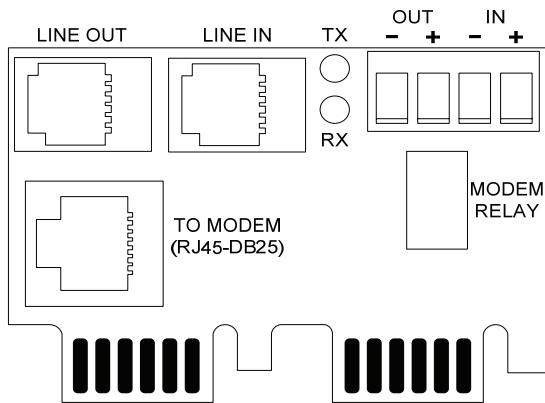
1. Dial up the M206 using the modem in your PC and connect @ 9600 baud.
2. Once connected, open the Online Network View window
3. Select the Network name at the top of the Online Network View window.
4. Right click and select Set Baud Rate.
5. Select the Modem BPS to your desired baud rate and click the OK button.



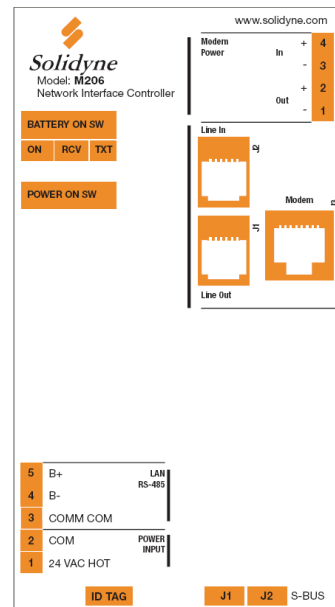
M206 Hardware Detail



M206 Plug In Module



M206 Cover Detail



© Copyright 2005 Solidyne Corporation All rights reserved.

No part of this document may be photocopied or reproduced by any means, or translated to another language without prior written consent of Solidyne.

All specifications are nominal and may change as design improvements are introduced. Solidyne shall not be liable for damages resulting from misapplication or misuse of its products.